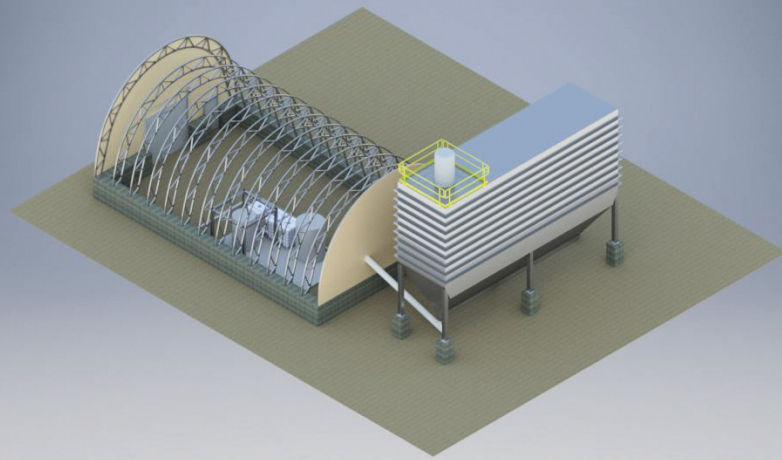
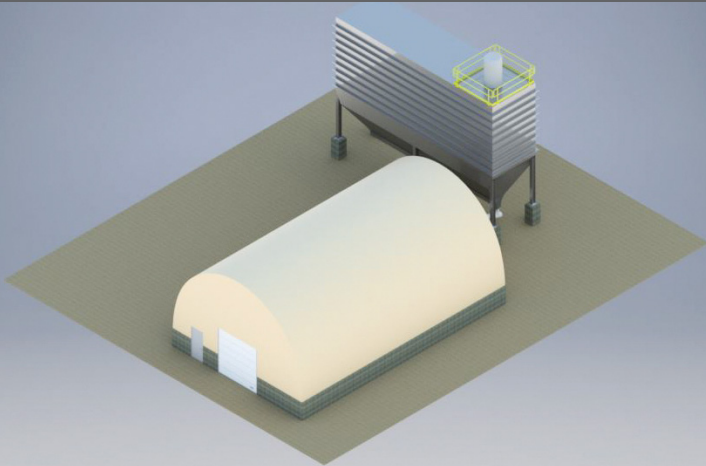




TURNKEY CEMENTED ROCKFILL PLANTS

An efficient cemented rockfill plant which ensures a constant production flow



Cemented Rockfill Plants

- Design of:
 - Supply and installation of the surface plant including the borehole
 - Complete distribution system with integrated automation
- Civil, mechanical and electrical engineering as well as programming
- Piping installation (surface and underground)
- Installation and commissioning
- Training and operation, if required

Advantages

- Costs and models can be customized to your project
- Assisted by experienced mining engineers
- Ensures a constant production flow
- Optimization of the timetable
- Automated cleaning
- Optimization of the work schedule



ASDR
Turnkey Projects
691, Royale Street
Malartic, Quebec, Canada
J0Y 1Z0

Phone: +819 757-3039
Email: info@asdr.ca

HERE, AS ELSEWHERE...
A TRIPLE E COMMITMENT

EXPERTISE
EFFICIENCY
ETHICS

www.asdr.ca